

UNITED STATES MARINE CORPS
School of Infantry
Training Command
PSC Box 20161
Camp Lejeune, NC 28542-0161

ICS0101
15 Dec 03

STUDENT OUTLINE

INTRODUCTION TO THE MARINE CORPS INFANTRY

LESSON PURPOSE

The purpose of this lesson is to provide the Marines with an overview of the organization of an infantry battalion, to introduce them to the enlisted military occupational specialties in a typical infantry battalion, and to discuss the capabilities of the weapons organic to an infantry battalion.

1. **INFANTRY BATTALION ORGANIZATION.** Infantry battalions are divided into 5 companies.

a. Headquarters and Service company (H&S Co). The mission of headquarters and service company is to provide the infantry battalion commander with the means to effectively command and control subordinate and attached units in the conduct of ground combat operations, and direct the sustainment of the battalion and attached units. In order to accomplish this mission, the company is organized into 6 elements.

(1) Battalion Headquarters. The battalion headquarters is made up of the battalion commander, executive officer, sergeant major, S-1 section (Admin), S-2 section (Intel), S-3 section (Operations), S-4 section (Logistics)

(2) Company Headquarters. The H&S company headquarters is made up of the company commander, first sergeant, company gunnery sergeant, and company clerks.

(3) Scout Sniper Platoon. The scout sniper platoon is made up of the platoon commander (0203 LT), platoon sergeant (8541/0369 SSgt), and scout sniper teams (8541/0311).

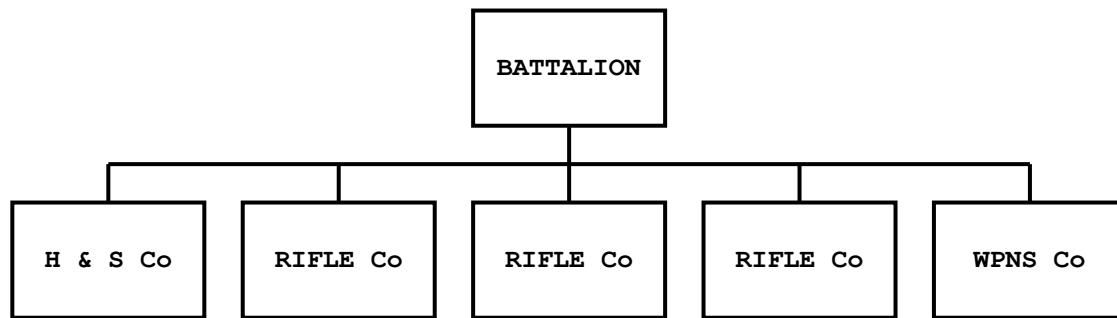
(4) Communications Platoon. The communications platoon provides all of the communication/information system support for the battalion.

(5) Service Platoon. The service platoon provides the battalion with supply, ordnance, motor transport, and food service support.

(6) Medical Platoon. The medical platoon provides the battalion with personnel medical support in garrison and during combat operations.

b. 3 Rifle Companies (A Co, B Co, C Co, etc.).

c. Weapons Company (Wpns Co).



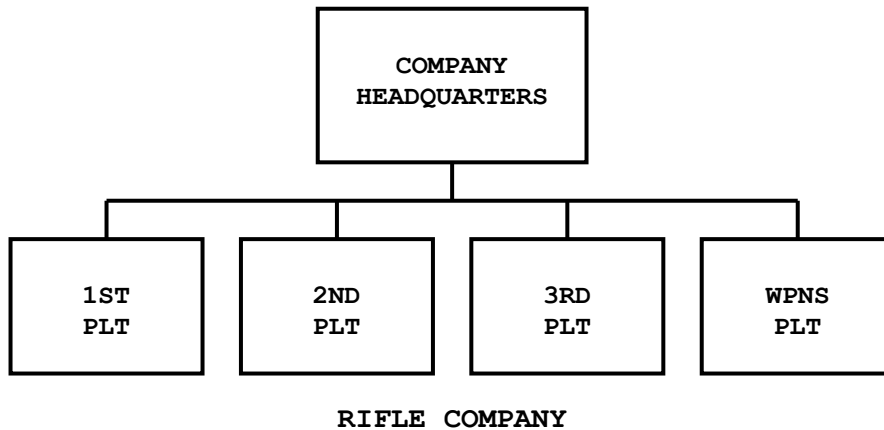
INFANTRY BATTALION

2. **RIFLE COMPANY**. The mission of the rifle company in the infantry battalion is to locate, close with, and destroy the enemy by fire and maneuver or repel the enemy's assault by fire and close combat in order to destroy him or his will to resist. The "letter" companies are made up of infantrymen (0311) and some weapons MOS (0331, 0341, 0351) Marines. Each battalion has 3 rifle companies designated by a letter of the alphabet. No two companies in a regiment will have the same letter designator. The battalion commander will normally designate one company each as the helo company, AAV company, or boat company. In order to accomplish their mission, the rifle company is divided into 5 platoons.

a. Company Headquarters. Headquarters platoon is made up of the company commander (0302 Capt), executive officer (0302 Lt), company first sergeant (9999), company gunnery sergeant (0369 Gysgt), and the company clerks (03XX).

b. 1st Platoon, 2nd Platoon, and 3rd Platoon. Each platoon is made up of a platoon headquarters; the platoon commander (0302 LT), platoon sergeant (0369 SSgt), platoon guide (0311 Sgt), and three 13-man infantry squads (0311).

c. Weapons Platoon. Weapons platoon provides the organic direct and indirect fires in support of the company's scheme of maneuver. The weapons platoon is made up of the platoon headquarters; the platoon commander (0302 Lt), platoon sergeant (0369 Gysgt), the machinegun section (0331) with M240G medium machineguns, the mortar section (0341) with M224 60mm mortars, and the assault section (0351) with MK153 SMAWs and demolitions.



3. **WEAPONS COMPANY**. The mission of the weapons company in the infantry battalion is to provide medium mortar support, anti-armor support, heavy machinegun support, and fire support coordination in order to support the infantry battalion's scheme of maneuver. The weapons company is made up of weapons MOS Marines (0331, 0341, 0351, 0352). Weapons company contains the heavy fire power and fire support weapons organic to an infantry battalion and is normally mobile through the use of the High Mobility Multipurpose Wheeled Vehicle (HMMWV) and various fast attack vehicles (IFAV, ITV, etc.). Weapons company is divided into 4 platoons.

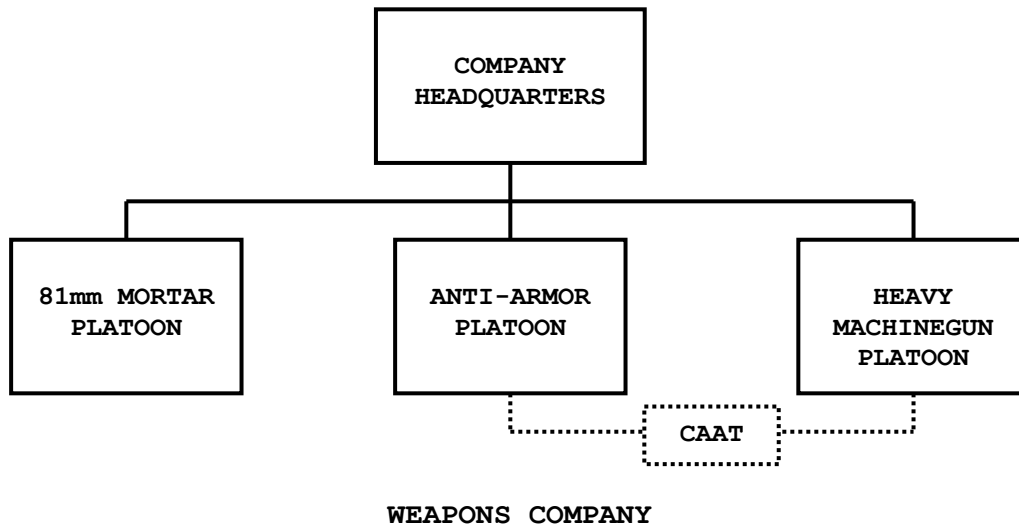
a. **Company Headquarters**. Headquarters platoon is made up of the company commander (0302 Maj), executive officer (0302 Capt), first sergeant (9999), operations chief (0369 Msgt), and the company clerks (03XX). The headquarters platoon of the weapons company will normally serve as the fire support coordination center (FSCC) for the battalion during combat operations.

b. **Heavy Machinegun Platoon**. The heavy machinegun platoon is made up of the platoon headquarters; the platoon commander (0302 Lt), platoon sergeant (0369 Gysgt), driver (03XX LCPL), and three heavy machinegun sections (0331) with M2 heavy machineguns and MK19 heavy machineguns mounted on vehicles.

c. **Mortar Platoon**. The mortar platoon is made up of the platoon headquarters; the platoon commander (0302 Lt), platoon sergeant (0848 Gysgt), ammo tech (2311), and drivers (0341), the fire direction center (FDC) section (0341), and two 81mm mortar sections (0341) with M252 81mm mortars normally transported in HMMWVs.

d. **Anti-armor Platoon**. The anti-armor platoon is made up of the platoon headquarters; the platoon commander (0302 Lt), platoon sergeant (0369 Gysgt), and driver (0311), the javelin section (0351) with M98A1 Javelins, and the antitank (TOW) section (0352) with M220E4 TOW2 Weapons Systems mounted on HMMWVs.

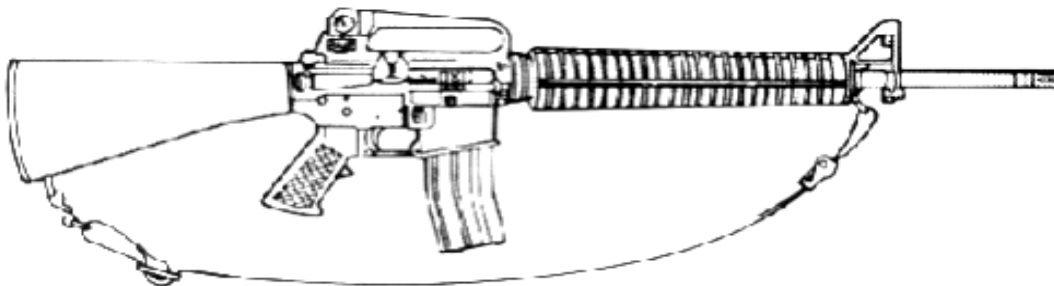
e. **Combined Anti-armor Teams (CAAT)**. Many of the infantry battalions in the Marine Corps employ the heavy machinegun platoon and anti-armor platoon in a combined anti-armor role. These two platoons can be found combined into one large CAAT platoon or divided into two smaller CAAT platoon based on the guidance of the battalion commander. Employed in this manner, the range and effectiveness of the heavy machineguns against area targets complement the range and effectiveness of the Javelin and TOW missiles against point targets.



4. **RIFLEMAN - MOS 0311**. The riflemen (0311) employ the M16A2 service rifle, the M203 grenade launcher and the squad automatic weapon (SAW). Riflemen are the primary scouts, assault troops, and close combat forces available to the MAGTF. They are the foundation of the Marine infantry organization, and as such are the nucleus of the fire team in the rifle squad, the LAR squad, scout-snipers in the infantry battalion, and reconnaissance or assault team in the reconnaissance units.

a. **M16A2 Service Rifle**. The M16A2 is a 5.56mm, magazine-fed, gas-operated, shoulder-fired weapon. It is designed to fire either semi-automatic or a three round burst through the use of a selector lever. The M16A2 commonly uses either a 30-round magazine and can be fitted with the M7 bayonet. The M16A2 is a direct fire weapon and remains the primary weapon of the Corp's riflemen

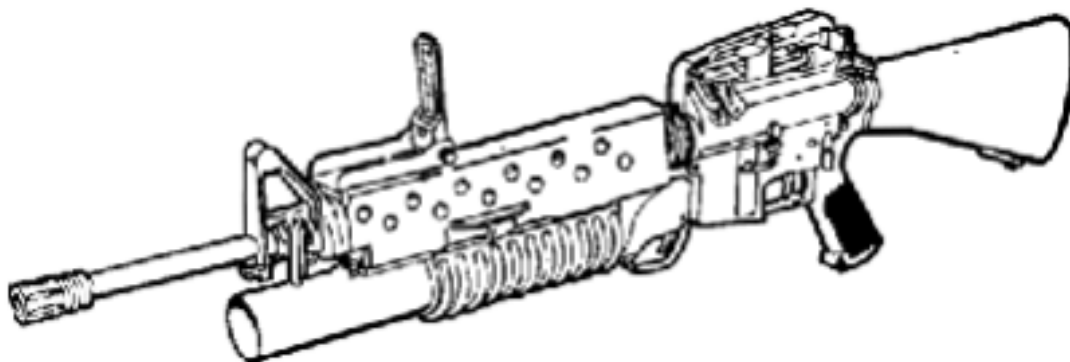
- | | |
|-------------------------|------------------------------|
| (1) Caliber: | 5.56 mm |
| (2) Weight (loaded): | 8.8 lbs |
| (3) Max Effective Range | 550 m (point)/800 m (area) |
| (4) Rates of Fire: | 45 rpm (semi)/90 rpm (burst) |



M16A2 SERVICE RIFLE

b. M203 Grenade Launcher. The M203 grenade launcher is a lightweight, single-shot, breech-loaded, pump action, shoulder-fired weapon attached to the M16A2 rifle. There are a total of nine standard 40mm rounds used in the M203: star cluster, star parachute, smoke (ground), smoke (canopy), high explosive, dual purpose, fragmentation, CS, and practice. The M203 is a multi-purpose indirect fire weapon, allocated on the basis of one per fire team, nine per platoon.

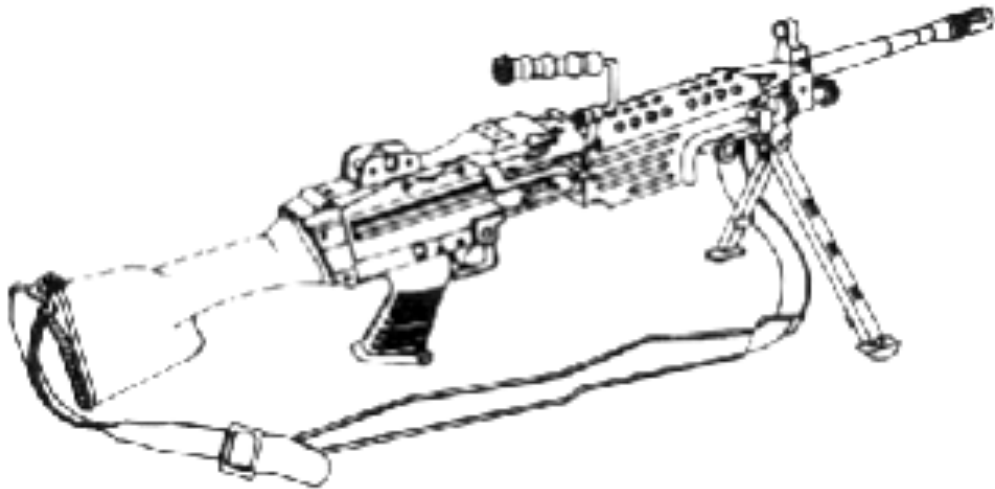
- | | |
|--------------------------|------------------------------|
| (1) Caliber: | 40 mm |
| (2) Weight: | 3 lbs |
| (3) Max Effective Range: | 150 m (point) / 350 m (area) |
| (4) Max Range: | 400 m |



M16A2 SERVICE RIFLE WITH M203 GRENADE LAUNCHER

c. M249 SAW. The M249 squad automatic weapon (SAW) is a gas operated, air cooled, bipod-mounted individual weapon first introduced to the Corps in the mid-1980s. The SAW can accept belt-fed or magazine-loaded ammunition, although the M16 30-round magazine is normally only utilized in an emergency, as it reduces the weapons performance. The SAW is assigned to the automatic rifleman of each fire team, nine per platoon.

- | | |
|------------------------------------|--|
| (1) Caliber: | 5.56 mm |
| (2) Weight (loaded w/200 rd drum): | 22.08 lbs |
| (3) Max Effective Range: | 1,000 m |
| (4) Rates of Fire: | 725 rpm (cyclic)
85 rpm (sustained) |

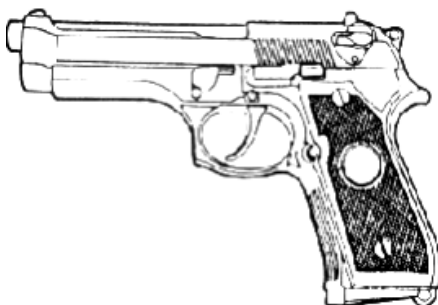


M249 SQUAD AUTOMATIC WEAPON

5. **CREW-SERVED WEAPONS.** In all four crew-served military occupation specialties, the gunner is armed with the M-9 service pistol for self-defense.

a. M9 Service Pistol Characteristics. The M9 service pistol is a semiautomatic, magazine-fed, recoil-operated, double action pistol, chambered for the NATO 9mm cartridge. The service pistol is a close personal defense weapon. Marines in the rifle company headquarters and the gunners of crew served weapons are armed with the service pistol.

- (1) Caliber: 9 mm NATO
- (2) Length: 8.54 in
- (3) Width: 1.50 in
40.89 oz (w/15 round mag)
- (4) Maximum Effective Range: 50 meters
- (5) Sights:
 - (a) Front sight; blade, integral with slide.
 - (b) Rear sight; notched bar, fixed to slide.
- (6) Safety Features; ambidextrous safety and firing pin block.

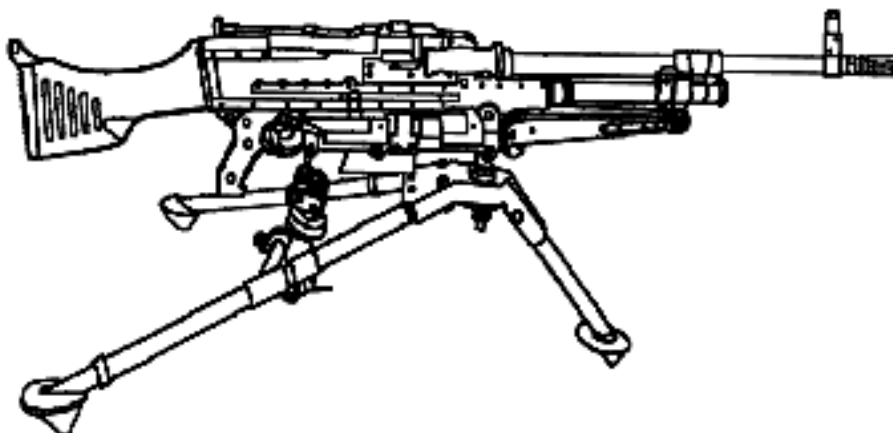


M9 SERVICE PISTOL

6. **MACHINE GUNNER - MOS 0331.** The machine gunner (0331) is responsible for the tactical employment of the 7.62mm medium machinegun, the 50 cal. And 40mm heavy machinegun, and their support vehicle. Machine gunners provide direct fire in support of the rifle and LAR squads/platoons/companies and the infantry and LAR battalions. They are located in the weapons platoons of the rifle companies and LAR companies and the Weapons Company of the infantry battalion.

a. **M240G Medium Machinegun.** The M240G is a belt-fed, gas-operated, air-cooled crew served machinegun that can be fired from the bipod or tripod. There are a total of six M240G Medium Machineguns, two per squad, in the machinegun section of the weapons platoon in the Rifle Company.

- | | |
|--------------------------|---|
| (1) Caliber: | 7.62 mm |
| (2) Weight: | 24.2 lbs |
| (3) Max Effective Range: | 1,800 m |
| (4) Rates of fire: | 650-950 rpm (cyclic)
100 rpm (sustained) |



M240G MEDIUM MACHINEGUN

b. M2 .50 caliber Heavy Machinegun. The M2 is a belt-fed, recoil-operated, air-cooled, crew served machinegun, capable of single shot and fully automatic, which can be fired from the vehicle mount or the tripod. There are a total of four M2 heavy machineguns, one per squad, two per section, in the heavy machinegun platoon of the Weapons Company.

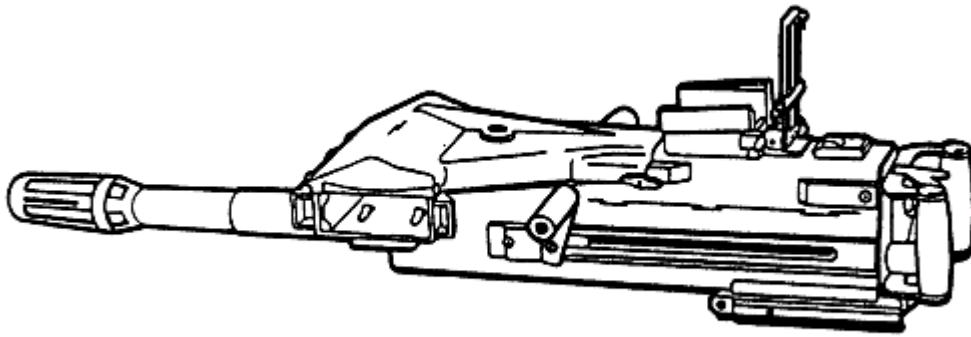
- | | |
|--------------------------|--|
| (1) Caliber: | 50 cal. |
| (2) Weight: | 130 lbs total
60 lbs (receiver)
26 lbs (barrel)
44 lbs (tripod/T&E) |
| (3) Max Effective Range: | 1,830 m |
| (4) Rates of fire: | 450-550 rpm (cyclic)
40> rpm (sustained) |



M2 HEAVY MACHINEGUN

c. Mk-19 40mm Heavy Machinegun. The Mk-19 is a belt-fed, blowback-operated, air-cooled, crew served machinegun that can be fired from the vehicle mount or tripod. There are a total of four Mk-19 Heavy Machineguns, one per squad, two per section, in the heavy machinegun platoon in the Weapons Company.

- | | |
|--------------------------|--|
| (1) Caliber: | 40mm |
| (2) Weight: | 140.6 lbs
75.6 lbs (receiver)
44 lbs (tripod/T&E)
21 lbs (cradle) |
| (3) Max Effective Range: | 1,500 m (point)
2,212 m (area) |
| (4) Rates of fire: | 325-375 rpm (cyclic)
40 rpm (sustained) |



MK19 HEAVY MACHINEGUN

7. **MORTARMAN - MOS 0341**. The Mortarman (0341) is responsible for the tactical employment of the 60mm light mortar and the 81mm medium mortar. Mortar-men provide indirect fire in support of the Infantry and LAR Battalions. They are located in the weapons platoon of the Rifle and LAR companies and the Weapons Company of the infantry battalions.

a. **M224 Mortar**. The 60mm mortar is a lightweight, smoothbore, muzzle-loaded, high-angle indirect fire weapon. It can be fired two different ways: either in the conventional mode with the bipod and standard M7 base plate set up or in the handheld mode using the lighter weight M8 assault base plate. The 60mm mortar uses four types of ammunition: high explosive, white phosphorus, illumination, and practice. The high explosive round weighs 3.2 lbs, has a range of 1,814 meters, and has a multi-option fuze that allows the mortarman to select either high airburst, point detonating, or delay. There are three M224s located in the mortar section of weapons platoon in each infantry company.

- | | |
|--------------------|--|
| (1) Caliber: | 60mm |
| (2) Weight: | 46.5 lbs (total)
14.4 lbs (cannon)
14.4 lbs (baseplate-M7)
15.2 lbs (bipod) |
| (3) Range: | Max: 1,930 m |
| (4) Rates of Fire: | 30 rpm (maximum)
20 rpm (sustained) |



M224 60mm MORTAR

b. M252 Mortar. The M252 81mm mortar is a smooth-bore, muzzle-loaded, high-angle-of-fire weapon. The 81mm mortar uses four types of ammunition: high explosive, phosphorus, illumination, and practice. The high explosive round weighs 10 lbs, has a range of 5,608 meters, and has a multi-option fuze that allows the mortarman to select either high airburst, point detonating, or delay. There are eight M252s located in the two mortar sections of mortar platoon in the Weapons Company.

- | | |
|--------------------|--|
| (1) Caliber: | 81mm |
| (2) Weight: | 93.5 lbs (total)
35 lbs (cannon)
29 lbs (baseplate-M3A1)
27 lbs (bipod) |
| (3) Range: | Max: 5,608 m |
| (4) Rates of Fire: | 30 rpm (max)
15 rpm (sustained) |



M252 81mm MORTAR

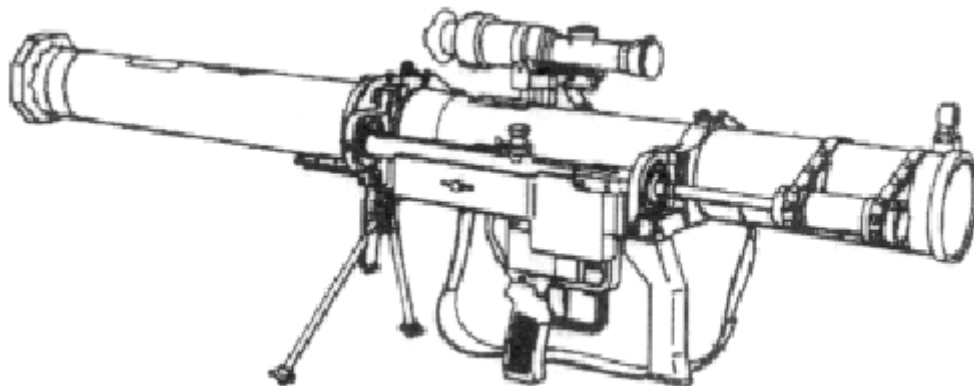
8. **ASSAULTMAN**. The Assaultman (0351) is responsible for the tactical employment of the shoulder-launched multipurpose assault weapon (SMAW), and the M98A1 Javelin medium assault anti-tank weapon. Assaultmen provide demolitions capability, anti-bunker and anti-armor fire in support of the rifle squads/platoons/companies and the infantry battalions, and are located in the weapons platoons and weapons companies of the infantry battalion.

a. Mk 153 SMAW. The shoulder-launched Multi-Purpose Assault Weapon (SMAW) is a one-man-operable, smoothbore; fiberglass rocket launcher with a 6-shot 9mm spotting rifle attached to the right side of the tube and bore sighted with the launcher. The sight mount, attached to the left side of the launcher, is designed accommodate either a telescopic sight or the AN/PVS-4 night vision sight.

- | | |
|--------------------------|------------------------------|
| (1) Caliber: | 83mm |
| (2) Weight (loaded): | 29.01 lbs |
| (3) Max Effective Range: | 250 m (HEDP)
500 m (HEAA) |
| (4) <u>Rockets</u> . | |

(a) The high explosive, dual-purpose (HEDP) rocket (bunker buster) will detonate on impact with either a quick or slow time-delay fuze. It is able to penetrate 7 feet of wood-reinforced bunker, 8 inches of concrete, or 1 inch of steel armor.

(b) The high explosive antiarmor (HEAA) rocket is capable of penetrating 23.4 inches of rolled homogeneous armor. A total of six SMAWs are located in the assault section of the weapons platoon in each rifle company.



MK153 SHOULDER-LAUNCHED MULTIPURPOSE ASSAULT WEAPON (SMAW)

b. M98A1 Javelin. The Javelin is a fire-and-forget, man-portable, medium range, anti-tank weapon that consists of a Command Launch Unit (CLU) and a round. The Javelin can engage targets in the open in top attack mode or targets under cover in direct attack mode. The rocket is capable of penetrating over 600mm of armor plating. There are 8 Javelin systems in the Javelin section of the Antiarmor platoon in the Weapons Company.

- | | |
|-----------------------|---|
| (1) Missile Diameter: | 5 inches |
| (2) Weight: | 9.77 lbs (CLU w/o battery)
34.16 lbs (round) |
| (3) Effective Range: | Max: 2000 m |



M98A1 JAVELIN

9. **ANTI-TANK ASSAULT GUIDED MISSILEMAN.** The Anti-tank Assault Guided Missileman (0352) is responsible for the tactical employment of the M220E4 TOW2 heavy anti-tank weapon and associated HMMWV vehicle system. They provide anti-tank fire in support of the infantry battalion, the LAR battalion, the tank battalion, the Marine Division and the MAGTF. There are 8 TOW weapon systems located in the anti-armor platoon of the infantry battalion, the weapons platoon of LAR, and the anti-tank platoon and the scout platoon of the tank battalion.

a. **M220E4 TOW2.** The M220E4 TOW2 is a tube launched, optically tracked, wire-command-link guided missile heavy anti-tank weapon. It can be fired from the vehicle mount on the TOW variant of the HMMWV or LAV or ground mounted

- | | |
|--------------------------|------------------------|
| (1) Missile Diameter: | 8.6 inches |
| (2) Weight: | 246 lbs (total system) |
| (3) Min Effective Range: | 65m |
| (4) Max Effective Range: | 3,750m |



M220E4 TOW2 WEAPON SYSTEM MOUNTED ON HMMWV

10. **COMBINED ARMS EFFECTS.**

a. Combined Arms refers to the application of tactics and techniques used at all levels. This implies that we take advantage of the complementary characteristics of different types of units and weapons to enhance our mobility and firepower. At the fire team level, we apply combined arms through the complimentary effects of the automatic weapon and grenade launcher within a fire team. We pin an enemy down with the high-volume, direct fire of the automatic weapon, making him a vulnerable target for the grenade launcher. If he moves to escape the impact of the grenades, we engage him with the automatic weapon (FMFM 1).

b. At the company level, the Squad leader can use the indirect support of the company's 60mm mortar to pin the enemy at the top of a hill. As he maneuvers, the mortar fire lifts as his squad closes on the enemy position and assaults before the enemy can effectively react. In this way, we can use combined arms and the unique characteristics of these twelve weapon systems at the company and battalion level, to fix the enemy in place and destroy him.

REFERENCES :

TM 1005A-10/1A Operator's Manual for Pistol 9mm, M9, pages 2-1 through 2-2.

TM 05538C-10/1A Rifle, 5.56MM M16A2 W/E pages 1 through 5.

TM 9-1010-221-10 M203 Grenade Launcher w/ch 1-4 (17 Sep 84), pages 1-2 through 1-5.

TM 08671A-10/1 Operator's Manual, Machinegun, 5.56mm, M249, pages 1-5 through 1-11.

FMFM 6-3 Marine Infantry Battalion, pages 1 through 4.

MCO P1200.7U Military Occupational Specialties Manual, pages 3-26 through 3-33.

TM 02498A-10/1 Operator's Manual Machineguns, Caliber .50, Browning, M2, Heavy Barrel, pages 1-5 through 1-10.

FMFM 6-4 Marine Rifle Company/Platoon, pages 1 through 10.

TM 08521A-10/1A Operator's Manual, Machinegun 40mm, MK-19 Mod 3, pages 14 through 16.

TM 08670B-10/1A Operator's Manual, Machinegun, 7.62mm, M240G, pages 1-4 through 1-11.

TM 08673A-10/1 Launcher Assault Rocket, pages 1-1 through 1-4; TM 09922A-10/1 Mortar 81mm, M252, pages 1-3 through 1-9.

TM 9-1010-223-10 Lightweight Company Mortar 60mm, M224, pages 1-3 through 1-9.

TM 9-1425-450-12 Operators and Organizational Maintenance Manual for the TOW2 Weapons System, pages 1-10 through 1-11.

TM 09397B-12/1 Operator's Manual for M98A1, Javelin, pages 1-10 through 1-18.

11. This page intentionally left blank